

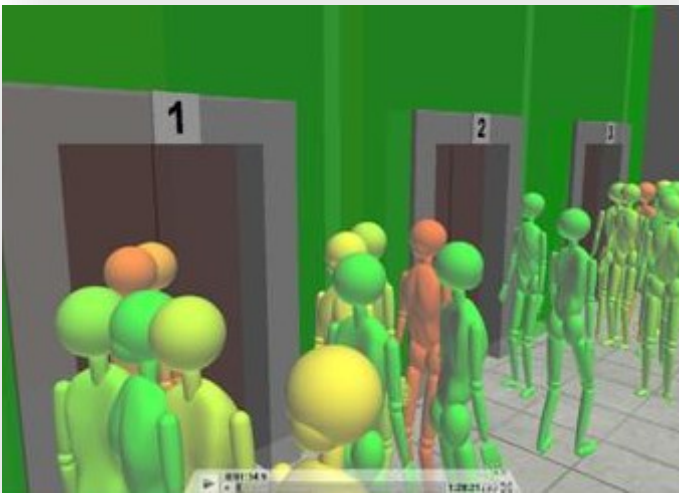


AdSimulo

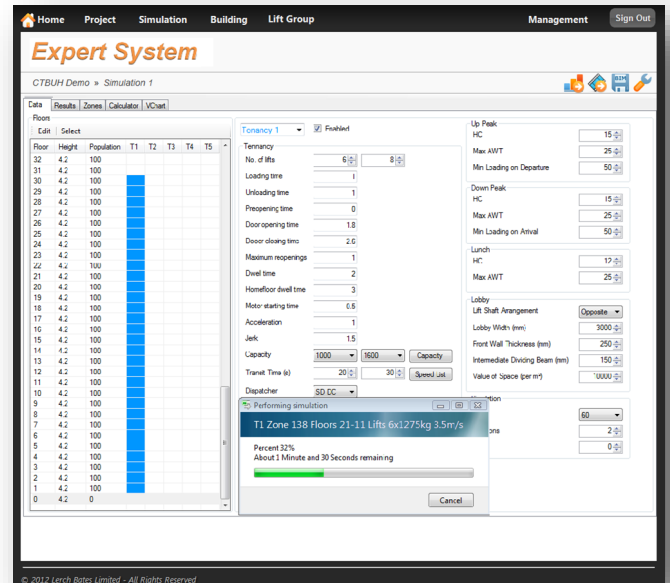
A new leading edge design tool for vertical transportation planning...

Our new application with simulation, visualisation and IFC output file is quite revolutionary in that it enables you to potentially design the vertical transportation for a building within a few hours outputting reports on its performance, a visualisation of the lifts in use and an industry standard IFC file output BIM of the lifts ready to be inserted into the overall building BIM.

We are expanding the expert system to identify the optimum floor for a sky lobby or series of skylobbies for supertall buildings. We are also adding in the various other types of lifts and escalators in the building so that you can visualise the entire vertical transportation in operation in one model. Going forward all the associated information for the rest of the building design team such as structural and electrical loads will also be included.



Visualisation of Passenger Traffic



On Line AdSimulo Application

Expert System

The design and specification of lift systems for large buildings is a complex process. This complexity is demonstrated by the fact that some solutions adopted in high rise buildings are considered sub-optimal. Large modern buildings often incorporate shuttle lifts that take people to a sky lobby, from which local lifts take people on to their final destination.

During the past six years we have developed an "Expert System" based upon a Building Traffic Simulator which is currently being integrated with our on-line application "AdSimulo". The application embodies our consultant's expertise in the form of rules together with their in-depth knowledge of lift system design in order to speed up and automate much of the design process.

Design work that took months can now be done in hours...